

CABLE LAYING PRODUCTS

Winches

Trailers

Straight Cable Rollers

Triple Corner Rollers

Suspension Rollers

Protection Rollers

Duct Rod & Accessories

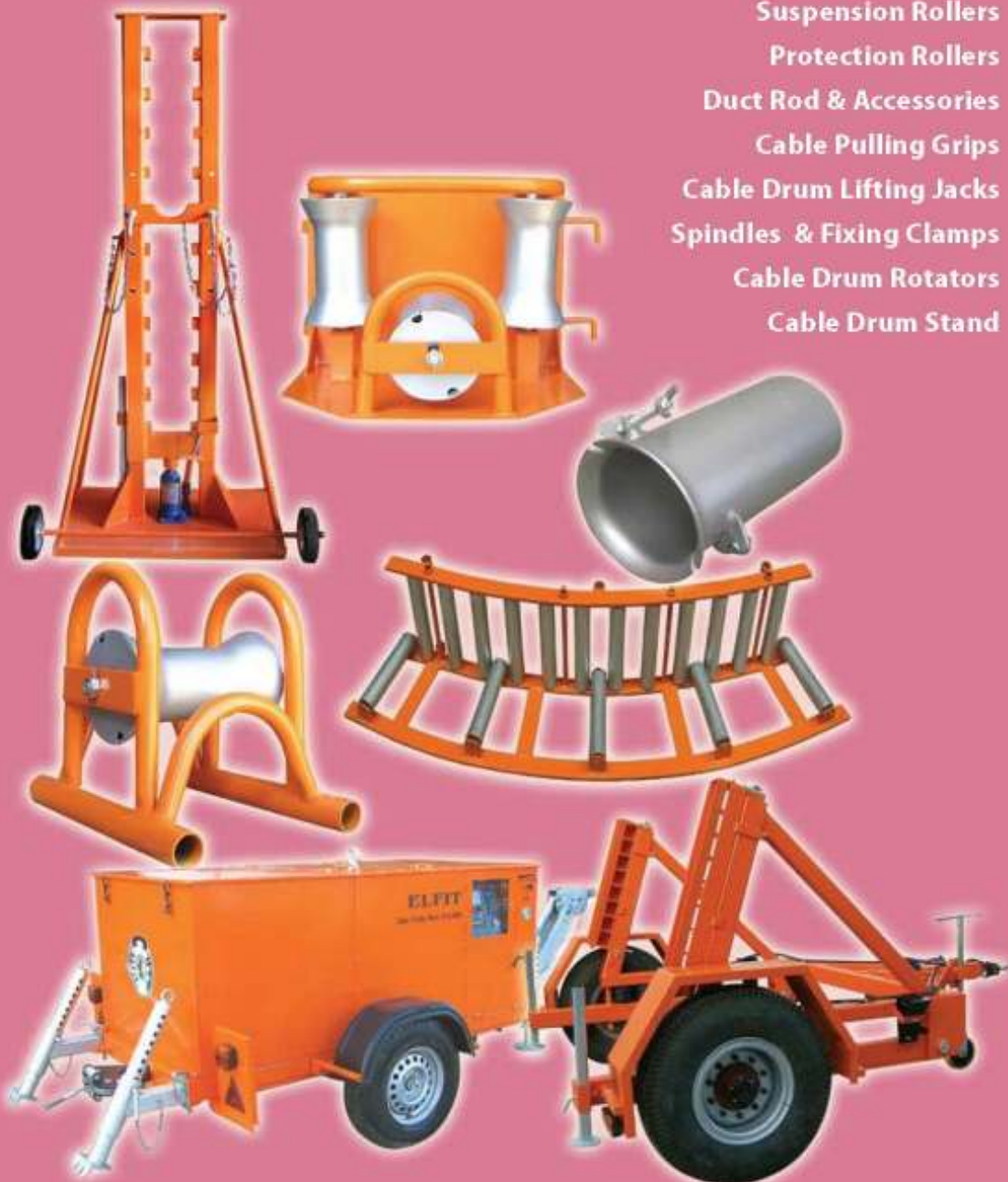
Cable Pulling Grips

Cable Drum Lifting Jacks

Spindles & Fixing Clamps

Cable Drum Rotators

Cable Drum Stand



Cable Pulling Winch



FEATURES

STANDARD

Double Capstan Drive
Emergency Stop
Hydraulic Drum Drive
(Pull IN & Pull OUT)
Sound Proof Sheet Metal
Overrunning Brakes
12V Lighting System

OPTIONAL

Digital Recorder
Data Log to Download Data

| | Model | |
|------------------|--------------------------|--------------------------|
| TECHNICAL DATA | EHW 3000 | EHW 5000 |
| Pulling Tension | 3000Kp | 5000Kp |
| Rope Speed | 0-50m/min | 0-40m/min |
| Rope Dia | 09mm | 12mm |
| Rope Length | 750m | 750m |
| Working Pressure | 210Bar | 240Bar |
| Weight | 1650Kg | 1950Kg |
| Overall Length | 4600mm | 4600mm |
| Overall Width | 1600mm | 1600mm |
| Overall Height | 1400mm | 1400mm |
| Canopy Length | 2360mm | 2360mm |
| Canopy Width | 1160mm | 1160mm |
| Canopy Height | 850mm | 850mm |
| Tyres | 195 R 14C | 195 R 14C |
| Drive Engine | Diesel, Lambordini | Diesel, Lambordini |
| Rating KW/HP | 26KW / 35.8HP-Air Cooled | 26KW / 35.8HP-Air Cooled |
| Finish | Powder Coating RAL 2004 | Powder Coating RAL 2004 |
| Product Code | WI 0021 A | WI 0020 A |

Note: Other rope lengths can be provided on request

Cable Drum Trailers

Model ECT 1006



Model ECT 1010-PE



FEATURES

STANDARD

Heavy Duty Steel Construction
Hydraulic Hand Pump
Spindle with 2 fixing Clamps
Lighting System

OPTIONAL

Petrol Engine
Rubber driving roller

| TECHNICAL DATA | Model | | | | |
|---------------------------|----------------------------------|-----------|-----------------|----------------------------|--------------------------------|
| | UT | ECT 1003 | ECT 1006 | ECT 1010 | ECT 1020 |
| Payload | Ton 3 | 6 | 10 | 20 | |
| Max. Speed | Km/h 40 | 24 | 24 | 16 | |
| Dead Weight | Kg 750 | 1300 | 1300 | 4000 | |
| Total Weight | Kg 3750 | 7300 | 11300 | 24000 | |
| Coupling Height | mm 610 | 820 | 820 | 820 | |
| Towing Eye | mm 30 | 42 | 42 | 42 | |
| Drum Diameter Min | mm 1060 | 2000 | 2300 | 2500 | |
| Drum Diameter Max | mm 2500 | 3200 | 3500 | 4600 | |
| Drum Width Max | mm 1300 | 1700 | 2000 | 2400 | |
| Spindle Diameter | mm 80-Solid | 89-Tube | 89-Tube | 130-Solid | |
| Clear Width | mm 1580 | 2000 | 2300 | 2700 | |
| Overall Length | mm 3300 | 4150 | 4150 | 4150 | |
| Overall Width | mm 2300 | 2900 | 3370 | 3600 | |
| Overall Height (unloaded) | mm 1800 | 2200 | 2200 | 2200 | |
| Tyres | 2 x 8.5R 12PR 17.5 | | 2 x 12R 20PR 18 | 2 x 12R 20PR 18 | 2 x 12R 20PR 18+2 & 8.25-15-14 |
| Drum Lift-Hyd System | Optional for Hydraulic Drum Lift | | - | Petrol Engine 12.5HP-Honda | |
| Finish | RAL 2004 | | | | |
| Product Code | TR 0038 A | TR 0043 A | TR 0022 A | TR 0054 A | |

Trench Cable Rollers for Straight Pulling Application

Straight Cable Rollers



Two Casing Supports, Tubular Frame Roller Body Made of Precision Steel Tube Bearings Protected against dust and dirt.

Finish: Fabricated from black steel. Frame Powder Coated RAL 2004 and Roller is Hot Dip Galvanized in accordance with **BS-729**.

| Length | Width | Height | Weight |
|--------|-------|--------|--------|
| 300mm | 220mm | 260mm | 5.5Kg |

| Product Code | Description |
|------------------|----------------------------------|
| RO 0103 A | Roller, Straight 7" – HDG |
| RO 0103 C | Roller, Straight 7" – PC |

Straight Cable Roller – Heavy Duty



Solid ground plate of steel 2-tube guiding bows Pulley body made of joint less precision steel tube Bearings protected against dust and dirt.

Finish: Fabricated from black steel is Hot Dip Galvanized in accordance with **BS-729** and topcoat with silver grey galvanized painting

| Length | Width | Height | Weight |
|--------|-------|--------|--------|
| 300mm | 220mm | 220mm | 6.5Kg |

| Product Code | Description |
|------------------|------------------------------|
| RO 0104 B | Roller Heavy Duty-HDG |
| RO 0104 C | Roller Heavy Duty-PC |

Straight Roller Long Base



This roller is designed for use in trenches

Finish: Fabricated from black steel. Frame Powder Coated RAL 2004 and Roller is Hot Dip Galvanized in accordance with **BS-729**.

| Length | Width | Height | Weight |
|--------|-------|--------|--------|
| 580mm | 220mm | 190mm | 6.0Kg |

| Product Code | Description |
|------------------|----------------------------------|
| RO 0232 A | Roller, Straight 7" – HDG |
| RO 0232 B | Roller, Straight 7" – PC |

Narrow Roller



Narrow roller designed for use in narrow trenches. Light duty suitable for cables up to 76mm dia. Two casing supports fitted with steel roller

Finish: Fabricated from black steel. Frame Powder Coated RAL 2004 and Roller is Hot Dip Galvanized in accordance with **BS-729**.

| Length | Width | Weight |
|--------|-------|--------|
| 320mm | 145mm | 2.75Kg |

| Product Code | Description |
|------------------|----------------------------|
| RO 0266 A | Narrow Roller – HDG |
| RO 0266 B | Narrow Roller – PC |

Trench Cable Rollers for Corner Application

Triple Corner Roller (Type-1)



Two vertical and one horizontal pulley of precision steel tube. Bearings protected against dust and dirt. Plug-in joints to fit the elements

Finish: Fabricated from black steel. Frame Powder Coated RAL 2004 and Roller is Hot Dip Galvanized in accordance with **BS-729**.

| Length | Width | Height | Weight |
|--------|-------|--------|--------|
| 400mm | 300mm | 315mm | 14.0Kg |

| Product Code | Description |
|------------------|-----------------------------------|
| RO 0110 B | Triple Corner Roller – HDG |
| RO 0110 C | Triple Corner Roller – PC |

Triple Corner Roller (Type-2)



Two vertical and one horizontal pulley of precision steel tube. Bearings protected against dust and dirt. Plug-in joints and roller

Finish: Fabricated from black steel is Hot Dip Galvanized in accordance with **BS-729** Frame is HDG/PC and topcoat with silver grey galvanized painting

| Length | Width | Height | Weight |
|--------|-------|--------|--------|
| 400mm | 300mm | 315mm | 14.0Kg |

| Product Code | Description |
|------------------|-----------------------------------|
| RO 0217 A | Triple Corner Roller – HDG |
| RO 0217 B | Triple Corner Roller – PC |

Double Corner Roller Angled



One vertical and one horizontal pulley of precision steel tube. Bearings protected against dust and dirt. Plug-in joints to fit the elements. This roller is designed for taking the heaviest cables round difficult corners and bends.

Finish: Fabricated from black steel. Frame Powder Coated RAL 2004 and Roller is Hot Dip Galvanized in accordance with **BS-729**.

| Length | Width | Height | Weight |
|--------|-------|--------|--------|
| 280mm | 160mm | 300mm | 9.5Kg |

| Product Code | Description |
|------------------|-----------------------------------|
| RO 0273 B | Roller, Double Corner - PC |

Bend Roller / Vertical Horizontal Roller



12 vertical and 5 horizontal pulley of precision steel tube. Bearings protected against dust and dirt. Plug-in joints to fit the elements. This roller is designed for taking the heaviest cables round difficult bends.

Finish: Fabricated from black steel. Frame Powder Coated RAL 2004 and Roller is Hot Dip Galvanized in accordance with **BS-729**.

| Length | Width | Height | Weight |
|--------|-------|--------|--------|
| 1590MM | 345MM | 300MM | 52Kg |

| Product Code | Description |
|------------------|---------------------------------------|
| RO 0319 B | Roller, Vertical Horizontal-PC |

Cable Rollers

Cable Guide and Support Roller



To be used in front of the drum which centralizes the cable from the drum into the trench. Two guiding and supporting rollers. Pulley body made of precision steel tube. Bearings protected against dust and dirt stable structural steel frame in hot dip galvanized execution.

| Length | Width | Height | Weight |
|--------|-------|--------|--------|
| 980mm | 490mm | 490mm | 20Kg |

| Product Code | Description |
|--------------|---|
| RO 0080 A | Cable Guide & Support Roller – Light Duty – HDG |
| RO 0080 B | Cable Guide & Support Roller – Heavy Duty – HDG |

Draw off Roller



To lead the cable directly from the drum into the trench. One steel tube roller on heavy-duty angle steel base. Bearings protected against dust and dirt.

| Length | Width | Height | Weight |
|--------|-------|--------|--------|
| 1060mm | 180mm | 220mm | 15Kg |

| Product Code | Description |
|--------------|-----------------------|
| RO 0066 B | Draw off Roller – HDG |
| RO 0066 C | Draw off Roller – PC |

Draw off Roller with Stand / Step Rollers



Normally as per the draw off roller (see bottom left picture) but with angled stand

| Product Code | Description |
|--------------|------------------------------|
| RO 0404 B | 1800mm (W) X 0.25m (H) 50Kg |
| RO 0323 B | 1800mm (W) X 0.50m (H) 63Kg |
| RO 0321 B | 1800mm (W) X 1.00m (H) 76Kg |
| RO 0341 B | 1800mm (W) X 1.50m (H) 85Kg |
| RO 0392 B | 1800mm (W) X 2.00m (H) 100Kg |
| RO 0391 B | 1800mm (W) X 2.50m (H) 120Kg |
| RO 0405 B | 1800mm (W) X 3.00m (H) 135Kg |

- Any other sizes can be made to order.

Cable Rollers

Vertical Roller



9 vertical steel rollers mounted in a heavy duty frame. Bearings protected against dust and dirt.

Note: This vertical roller is used in combination with horizontal roller (see right side picture) and where larger diameter cables have a restricted bend radius.

| Length | Width | Height | Weight |
|--------|-------|--------|--------|
| 900mm | 150mm | 310mm | 15Kg |

| Product Code | Description |
|--------------|-----------------------|
| RO 0290 B | Roller, Vertical - PC |

Horizontal Roller



2 horizontal rollers designed to provide easy access & fast removal of cables. Can be used up to size of cables up to 130mm diameter

| Length | Width | Height | Weight |
|--------|-------|--------|--------|
| 250mm | 260mm | 400mm | 13.5Kg |

| Product Code | Description |
|--------------|-------------------------|
| RO 0320 B | Roller, Horizontal - PC |

Skid Plate



Skid plate used with 2 horizontal rollers of easy access and removal of cables. Can be used upto sizes of 130mm diameter.

| Length | Width | Height | Weight |
|--------|-------|--------|--------|
| 920mm | 150mm | 300mm | 8Kg |

| Product Code | Description |
|--------------|-----------------|
| SK 0002 B | Skid Plate - PC |

Skid Roller



Can be used singly or linked together with stake pins to form a continuous run.

| Length | Width | Height | Weight |
|--------|-------|--------|--------|
| 330mm | 230mm | 300mm | 8.5Kg |

| Product Code | Description |
|--------------|------------------|
| SK 0003 B | Skid Roller - PC |

Cable Rollers

Suspension Roller – Heavy Duty



To take initial strain on the heaviest cables where they are lifted from the floor and onto cable trunking. The roller is suspended from a cross beam or similar in front of the trunking. Heavy duty roller running on waterproof ball bearings.

| Length | Width | Height | Weight |
|--------|-------|--------|--------|
| 250mm | 120mm | 440mm | 10Kg |

| Product Code | Description |
|--------------|------------------------------------|
| RO 0106 B | Roller, Suspension Heavy Duty - PC |

Suspension Roller – Light Duty



To enable cables to be winched and suspended in high buildings. Two steel flat bar support and single roller made of precision steel tube, bearings protected against dust and dirt.

| Length | Width | Height | Weight |
|--------|-------|--------|--------|
| 900mm | 150mm | 310mm | 15Kg |

| Product Code | Description |
|--------------|------------------------------------|
| RO 0108 A | Roller, Suspension Light Duty- HDG |
| RO 0108 B | Roller, Suspension Light Duty- PC |

Protection Roller



Cable protection roller with two rollers made of precision steel tube running on heavy duty sealing ball bearings. Adjustable spindle with tetragonal thread. Available in single and double roller.

| Length | Width | Height | Weight |
|--------|-------|--------|--------|
| 310mm | 410mm | 120mm | 10Kg |

| Product Code | Description |
|--------------|------------------------|
| RO 0092 A | Protection Roller - EG |

Manhole Triple Roller



To be used at the end of the manhole or pit entrance to ease the cable in. Three Rollers made from precision steel tube, running in dust and water proofed bearing.

| Length | Width | Height | Weight |
|--------|-------|--------|--------|
| 500mm | 290mm | 630mm | 15Kg |

| Product Code | Description |
|--------------|-----------------------------|
| RO 0113 A | Manhole Triple Roller – HDG |
| RO 0113 B | Manhole Triple Roller – PC |

* Any other size available on request.

Duct Cable Rollers & Guides

Bell mouth without Roller



To guide the cable through the duct to avoid damage to cable or the duct

| Product Code | Description |
|------------------|--|
| BE 0022 A | Bell mouth without Roller for Duct 76-82mm - HDG |
| BE 0067 A | Bell mouth without Roller for Duct 89-95mm - HDG |
| BE 0051 A | Bell mouth without Roller for Duct 150-175mm - HDG |
| BE 0084 A | Bell mouth without Roller for Duct 203-220mm - HDG |

* Special sizes can be manufactured on request

Bell mouth with Roller



To guide the cable through the duct to avoid damage to cable or the duct

| Product Code | Description |
|------------------|---|
| BE 0038 A | Bell mouth with Roller for Duct 76-82mm - HDG |
| BE 0069 A | Bell mouth with Roller for Duct 89-95mm - HDG |
| BE 0063 A | Bell mouth with Roller for Duct 150-175mm - HDG |
| BE 0090 A | Bell mouth with Roller for Duct 203-220mm - HDG |

* Special sizes can be manufactured on request

Manhole Guide Roller



To be used at the manhole entrance to avoid damage to the rope and used to guide draw ropes and cabling ropes. Roller made of cast iron mounted on a hot dip galvanized frame, running in dust and water proofed bearings.

| Length | Width | Height | Weight |
|--------|-------|--------|--------|
| 290mm | 250mm | 260mm | 15Kg |

| Product Code | Description |
|------------------|-----------------------------------|
| RO 0082 A | Manhole Guide Roller - HDG |

Guide Roller with Angled Base



To be used at the corner of the manhole for protection of the rope on the rim and corner of the manhole. The roller swivels to the direction of the pull. Roller made of cast iron mounted on a hot dip galvanized frame, running in dust and water proofed bearings.

| Length | Width | Height | Weight |
|--------|-------|--------|--------|
| 300mm | 245mm | 250mm | 14.5Kg |

| Product Code | Description |
|------------------|--|
| RO 0201 A | Guide Roller with Angled Base - HDG |

Duct Cable Rollers and Guides

Cable Protection Bend without Stop



To be used at the manhole entrance to avoid damage to the rope and used to guide draw ropes and cabling ropes. Roller made of cast iron mounted on a hot dip galvanized frame, running in dust and water proofed bearings.

| Product Code | Description |
|--------------|------------------------------------|
| PR 0022 A | Protection Bend without Stop - HDG |

Cable Protection Bend with Stop



To be used at the manhole entrance to avoid damage to the rope and used to guide draw ropes and cabling ropes. Roller made of cast iron mounted on a hot dip galvanized frame, running in dust and water proofed bearings.

| Product Code | Description |
|--------------|--|
| RO 0020 A | Protection Bend with Handle & Stop - HDG |

Cable Protection with 4 guide rollers



| Product Code | Description |
|--------------|--|
| RO 0060 B | Cable Protection with 4 guide rollers for Duct 110mm - HDG |
| RO 0332 A | Cable Protection with 4 guide rollers for Duct 200mm - HDG |

Cable Protection Bend with Angled Base



To be used in the rim corner of the manhole. The cable protection bends tiltable and pivoted to the direction of the pull

| Product Code | Description |
|--------------|---|
| PR 0015 B | Cable Protection Bend with Pivoted and Tilttable. |

Duct Pulling Accessories

Cable Pulling / Stocking Grips



Pulling Grips offer excellent means for pulling electrical cable, bare conductors, copper telephone cable or rope through conduit. Grips are made of high-quality galvanized steel strand to assure long life.

Single Thimble Pulling Grip

| Product Code | Cable Diameter (mm) | Break Ton | Product Code | Cable Diameter (mm) | Break Ton |
|--------------|---------------------|-----------|--------------|---------------------|-----------|
| PU 0016 A | 8-15 | 0.80 | PU 0018 A | 50-60 | 5.00 |
| PU 0015 A | 15-20 | 1.00 | PU 0021 A | 60-80 | 5.75 |
| PU 0019 A | 20-30 | 3.00 | PU 0022 A | 80-100 | 6.25 |
| PU 0020 A | 30-40 | 4.50 | PU 0024 A | 100-120 | 6.75 |
| PU 0017 A | 40-50 | 5.00 | PU 0023 A | 120-150 | 7.50 |

*Available single and double thimble pulling grips and larger diameter and longer lengths made on request.

Swivel Link



Designed specifically for underground cable pulling applications. Can handle all types of utility cables. Precision machined from high strength steel

CAUTION: To be used for cable stringing or pulling only.

Note: swivels are not designed to run around bull wheels.

| Product Code | Working Load | Pin Dia | Overall Length | Overall Dia | Weight-Kg |
|--------------|--------------|---------|----------------|-------------|-----------|
| SW 0012 A | 2 Ton | 10 | 160 | 30 | 0.30 |
| SW 0007 A | 3 Ton | 12 | 165 | 40 | 0.50 |
| SW 0009 A | 5 Ton | 16 | 190 | 50 | 2.50 |

Cable Drum Lifting Jacks

Portable Hydraulic Cable Drum Lifting Jacks



Hydraulic lifting jacks for cable drums Versatile and vertically adjustable drum axle jaw therefore minimum stroke to accommodate ranges of drums. Heavy duty ground plate and solid trusts fitted with wheels and complete with spindle and fixing clamps.

Finish: Powder Coated RAL 2004

| Capacity / Pair | Drum Min Ø | Drum Max Ø | Weight / Pair |
|-----------------|------------|------------|---------------|
| 5 Ton | 0.8m | 2.4m | 105 Kg x 2Ea |
| 10 Ton | 0.8m | 2.4m | 125 Kg x 2Ea |

| Product Code | Description |
|--------------|----------------------------------|
| JA 0044 A | Jack, Cable Drum Hydraulic 5Ton |
| JA 0024 B | Jack, Cable Drum Hydraulic 10Ton |

* Any other size available on request.

Screw Jacks



Easy to handle and simple operation. Heavy-duty base plate.

Finish: Powder Coated RAL 2004

| Capacity / Pair | Drum Min Ø | Drum Max Ø | Weight / Pair |
|-----------------|------------|------------|---------------|
| 3 Ton | 1.05m | 1.6m | 25 Kg x 2Ea |
| 6 Ton | 1.35m | 2.0m | 30 Kg x 2Ea |
| 8 Ton | 1.65m | 2.2m | 50 Kg x 2Ea |

| Product Code | Description |
|--------------|-----------------------------|
| JA 0013 A | Jack, Cable Drum Screw 3Ton |
| JA 0014 A | Jack, Cable Drum Screw 6Ton |
| JA 0017 A | Jack, Cable Drum Screw 8Ton |

Plinth for Screw Jack



| Product Code | Description |
|--------------|---|
| PL 0094 A | Plinth for Screw Jack 1200mm (L) x 320mm (W) Weight 25 Kg x 2Ea |

Cable Drum Lifting Jacks

Cable Drum Lifting Jacks – Heavy Duty



Finish: Powder Coated RAL 2004

| Capacity / Pair | Drum Min Ø | Drum Max Ø | Weight / Pair |
|-----------------|------------|------------|---------------|
| 30 Ton | 2.5m | 4.0m | 325 Kg x 2Ea |

| Product Code | Description |
|--------------|----------------------------------|
| JA 0038 A | Jack, Cable Drum Hydraulic 30Ton |

Cable Drum Lifting Jacks – Tower Type



Finish: Powder Coated RAL 2004

| Capacity / Pair | Drum Min Ø | Drum Max Ø | Weight / Pair |
|-----------------|------------|------------|---------------|
| 20 Ton | 1.5m | 3.4m | 410 Kg x 2Ea |

| Product Code | Description |
|--------------|----------------------------------|
| JA 0033 A | Jack, Cable Drum Hydraulic 20Ton |

Steel spindle/axies for cable drums

Finish: Powder Coated RAL 9005

| Jack Capacity | Dia. x Length Size-mm | Weight Kg |
|----------------|-----------------------|-----------|
| Screw Jack 3T | 50 x 1200-Solid | 19 |
| Screw Jack 6T | 50 x 1800-Solid | 28 |
| Screw Jack 8T | 80 x 2000-Solid | 79 |
| Hyd. Jack 5T | 89 x 3000-Tube | 75 |
| Hyd. Jack 10T | 89 x 3000-Tube | 75 |
| Tower Jack 20T | 100 x 3000-Solid | 185 |
| Hyd. H.D 30T | 130 x 4000-Solid | 422 |

Fixing Clamps for spindle / axles



Finish: Powder Coated RAL 9005

| Product Code | Description | Weight Kg |
|--------------|-----------------------|-----------|
| FI 0033 A | For Spindle 50-60mm | 1.60 |
| FI 0035 A | For Spindle 80-90mm | 2.20 |
| FI 0037 A | For Spindle 100-130mm | 3.20 |

Cable Drum Handling

Cable Drum Rotators – Heavy Duty



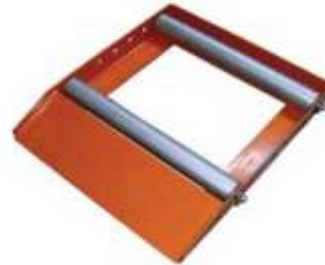
Suitable for cable drums of up to 1500Kg weight. Distance between rails is adjustable to different cable drum widths bearings protected.

Finish: Powder Coated RAL 2004.

| Length | Width | Height |
|--------|-------|--------|
| 1000mm | 225mm | 120mm |

| Product Code | Drum Diameter | | Weight-Kg |
|--------------|---------------|-----|-----------|
| | Max | Min | |
| RO 0128 A | 2400 | 300 | 83 |

Cable Drum Rotators – Light Duty



Suitable for cable drums of up to 200Kg weight. Distance between rails is adjustable to different cable drum widths bearings protected.

Finish: Powder Coated RAL 2004.

| Length | Width |
|--------|-------|
| 630mm | 550mm |

| Product Code | Drum Diameter | | Weight-Kg |
|--------------|---------------|-----|-----------|
| | Max | Min | |
| RO 0130 A | 750 | 120 | 18 |

Drum Carrier



Fitted with four PU wheels for easy maneuverability around the cable yard

Max. Drum Weight 500Kgs

Finish: Powder Coated RAL 2004

| Product Code | Drum Diameter | Drum Width | Weight Kg |
|--------------|---------------|------------|-----------|
| DR 0013 A | 1750mm | 930mm | 51 |

Universal Cable Drum Stand



Designed for electrical and telecom installer compact folding design fits any vehicle durable steel construction.

Complete with spindle and fixing clamps.

Max. Drum Weight 100Kgs

Finish: Powder Coated RAL 2004

| Product Code | Drum Diameter | Drum Width | Weight Kg |
|--------------|---------------|------------|-----------|
| ST 0018 A | 600mm | 500mm | 7 |

Duct Accessories

Duct Mandrel-Steel



Heavy duty with pulling eyes on each end for testing obstructions from the duct. Body made of mild steel

Finish: Hot Dip Galvanized

| Product Code | Description |
|------------------|------------------------------|
| MA 0012 A | Mandrel, Duct Steel 95mm-HDG |
| MA 0015 A | Mandrel, Duct Steel 90mm-HDG |

Duct Mandrel-Teflon



With pulling eyes on each end for testing obstructions in the duct. Body made of Teflon

| Product Code | Description |
|------------------|--|
| MA 0063 A | Mandrel, Duct Teflon-Ball Type 90mm-HDG |
| MA 0064 A | Mandrel, Duct Teflon-Cylindrical Type 90mm-HDG |

Wire Brush Mandrel-Small



Plastic bristles with a pulling eye on each end. Easily removes sand, grit and other light obstructions from the duct.

| Product Code | Description |
|------------------|------------------------------------|
| BR 0020 A | Brush, Plastic Bristles 97mm-Small |

Heavy Duty Wire Brush Mandrel



Heavy duty with pulling eyes on each end for removing obstructions from the duct

| Product Code | Description |
|------------------|----------------------------------|
| BR 0021 A | Brush, Plastic Bristles 95mm-Big |

*Any other size available on request.

Cable Lubricant



Directions

As cable or wire drawn into conduit, apply Clear Guide Lubricant with hands brush or pump keep cover on container when not in use. Store in cool place.

- The premier brand of wire lubricant for super fast pulls of electrical and telecommunications cables.
- Compatible with all cable jackets including low density polyethylene per ASTM D-1693
- Lubricants is stable up to 180 Degree F
- Freezes at 30 Degree F
- When it dries, it becomes a semi-fluid that won't clog conduit
- Non-Corrosive, Non-toxic and Non-flammable
- Environmentally safe
- Cleans up fast with soap and water
- Application by hand, brush or pump.

| Product Code | Description |
|------------------|----------------------------------|
| LU 0002 A | Lubricant, Cable Pulling 5Gallon |

Duct Rod – Hydraulic Cutter & Crimping Tool

Hydraulic Hand Operated Pump



Model No: CP-700

Operation output pressure 700Kg/cm²
2M High pressure oil tube, with fast connection point

| Product Code | Storage Oil (cc) | Size (LxWxH) |
|--------------|------------------|-----------------|
| TO 0108 A | 900 | 510 x 140 x 150 |

- Also available Hydraulic Foot Pump on request

Hydraulic Cable Cutter



Model No: FYP-120

It is designed to cut aluminum and copper cables having a max overall diameter of 120mm. use with CP-700 Pump

| Product Code | Cutting Range | Output |
|--------------|---------------|--------|
| TO 0107 A | 120mm | 12T |

- Also available Hand Operated Hydraulic cutting tool on request

Hydraulic Crimping Tool



Model No: FYO-630

Crimping Range 150mm²-630mm²
use with CP-700 Pump

| Product Code | Max. Pressure | Mould (mm) |
|--------------|---------------|-----------------------------|
| TO 0106 A | 30T | 150,185,240,300,400,500,630 |

- Also available Hand Operated or battery operated Hydraulic crimping tool on request

Duct Rod



It is an ideal and fast way of installing draw ropes and winch ropes into ducts, ready for cable pulling operations.

Rod : High quality 11mm reinforced fiberglass rod.
Fittings : Brass end fittings

Working temperature : -40°C - +80°C
Min Bend Radius : 300mm
Breaking tension : 5000Kg

| Product Code | Description |
|--------------|-------------------------|
| DU 0004 C | Duct Rod 11mm x 150m(L) |
| DU 0005 C | Duct Rod 11mm x 300m(L) |

- Any other length available on request

Measuring Wheels



Use: Measuring distance along routes in the telephone network.

Measuring Range: up to 9,999.99 forward and reverse.

Wheel Diameter: 250mm

Packing: Supplied with carry bag.

| Product Code | Description |
|--------------|---------------------------------|
| WH 0003 B | Tool, Wheel, Distance Measuring |

Duct Rod Accessories

Shackle Fitting



Fits onto tapered head to provide a larger pulling loop for attaching the rope or pull line.

| Product Code | Description |
|--------------|---------------------|
| SH 0001 A | Shackle fitting 8mm |

* Any other size available on request.

Flexible Leader



Helps guide the duct rod around bends, sweeps and duct misalignments.

| Product Code | Description |
|--------------|---------------------|
| FL 0053 A | Flexible Leader 8mm |

Starting Roller



Helps guide the duct rod around bends, sweeps, and duct misalignments. Also used when the conduit is already occupied by other cables.

| Product Code | Description |
|--------------|----------------------|
| RO 0098 A | Starting Roller 11mm |

* Any other size available on request.

Mini Harness



Screws onto the threaded end fitting to allow for easy wire attachment when pulling wire into conduit.

| Product Code | Description |
|--------------|------------------|
| MI 0014 A | Mini Harness 8mm |

* Any other size available on request.

Swivel Coupling



Used to connect two duct rods pushed into the conduit from the same end. Used when one length of duct rod is not long enough for the full conduit run. Also used as a rotating swivel when pulling wire or rope with the tapered head.

| Product Code | Description |
|--------------|----------------------|
| SW 0005 A | Swivel coupling 11mm |

Tapered Head

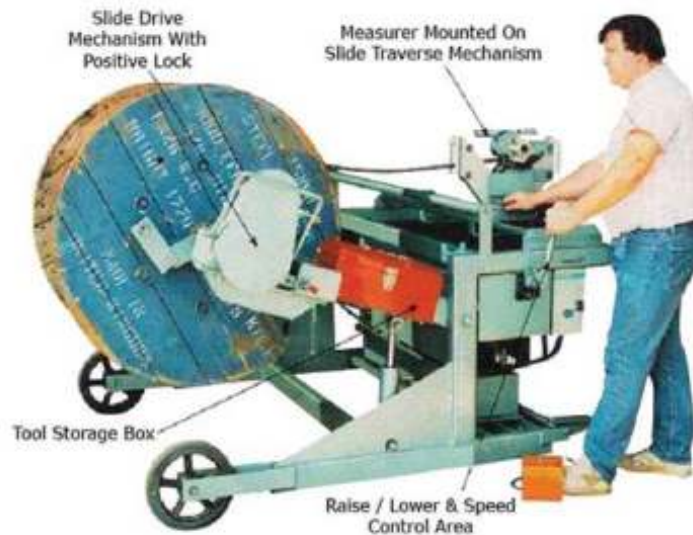


Attaches to the end fitting on the duct rod. Guides duct rod through the conduit and allows a pull line (diameter A) to be attached to the duct rod.

| Product Code | Description |
|--------------|-------------------|
| TA 0085 A | Tapered Head 11mm |

* Any other size available on request.

Cable Rewinding Machine



INTRODUCTION :

This Machine Is Introduced For Coiling Or Reeling Of Wires In A Manner To Maintain The Proper Layering / Level Winding Etc.

TECHNICAL DETAILS :

Model No. : NK 4 - 2R
Max Capacity : 400 LBS
Drum Dia : Min 24" & Max 54"
Drum Width Max : 38" x 4,000 LBS
Spped : 0 - 100 RPM

| Product Code | Description |
|--------------|-----------------------|
| WI 0028 A | Cable Winding Machine |